



SingHealth Academy Interactive Game Development Service

14 MAY 2009

Contents

INTRODUCTION TO THE SERVICE

COST OF SERVICE

TERMS AND CONDITIONS OF SERVICE

CONTACT DETAILS

Introduction

Cost

Terms & Conditions

Contact Details

Introduction to the Service



INTRODUCTION TO THE SERVICE

Why Use SingHealth Academy's Game Development Service?

- Assist educators to develop their training materials into an interactive game
- Allow educators more time to plan their training by taking out the hassle of thinking of 'engaging' recaps
- Assist educators to capture attention during training
- Assist educators to create a more engaging educational experience
- Assist participants to improve retention of salient information using 'fun' approach



INTRODUCTION TO THE SERVICE

4 Available Game Formats

There are four (4) available game formats for educators to choose from:

- 1) 'Quiz Show'
- 2) 'ShowDown'
- 3) 'Billionaire'
- 4) 'SpinOff'

INTRODUCTION TO THE SERVICE

Game Format 1 – ‘Quiz Show’

Game Format 1 – ‘Quiz Show’

- Game format is inspired by a classic TV game show
- Offers a powerful way to energize your training
- Maximum of 5 categories, 25 questions (i.e. 5 questions in each category) with a Final category/question



INTRODUCTION TO THE SERVICE

Game Format 2 – ‘ShowDown’

Game Format 2 – ‘ShowDown’

- Encourage collaboration
- Engage your participants
- More effective if you need to present any subject with multiple components. Simply place a question, like, “Name the six hallmarks of great customer service,” on the top of the board and watch the energy in the room spike, as teams compete to give all six answers and win the round.
- Maximum of 20 questions
- Suitable for 2 teams of 10 participants



INTRODUCTION TO THE SERVICE

Game Format 3 – 'Billionaire'

Game Format 3 – 'Billionaire'

- Suitable for a quick review or assessment,
- With 1-15 questions to provide a quick review
- Suitable for 2 groups of participants



Game Format 4 – ‘SpinOff’

- This game format is inspired by a classic TV game show. It offers a powerful way to energize your training.
- Maximum of 10 categories, 100 questions (i.e. 10 questions in each category) with a Final category/question



Cost of the Service



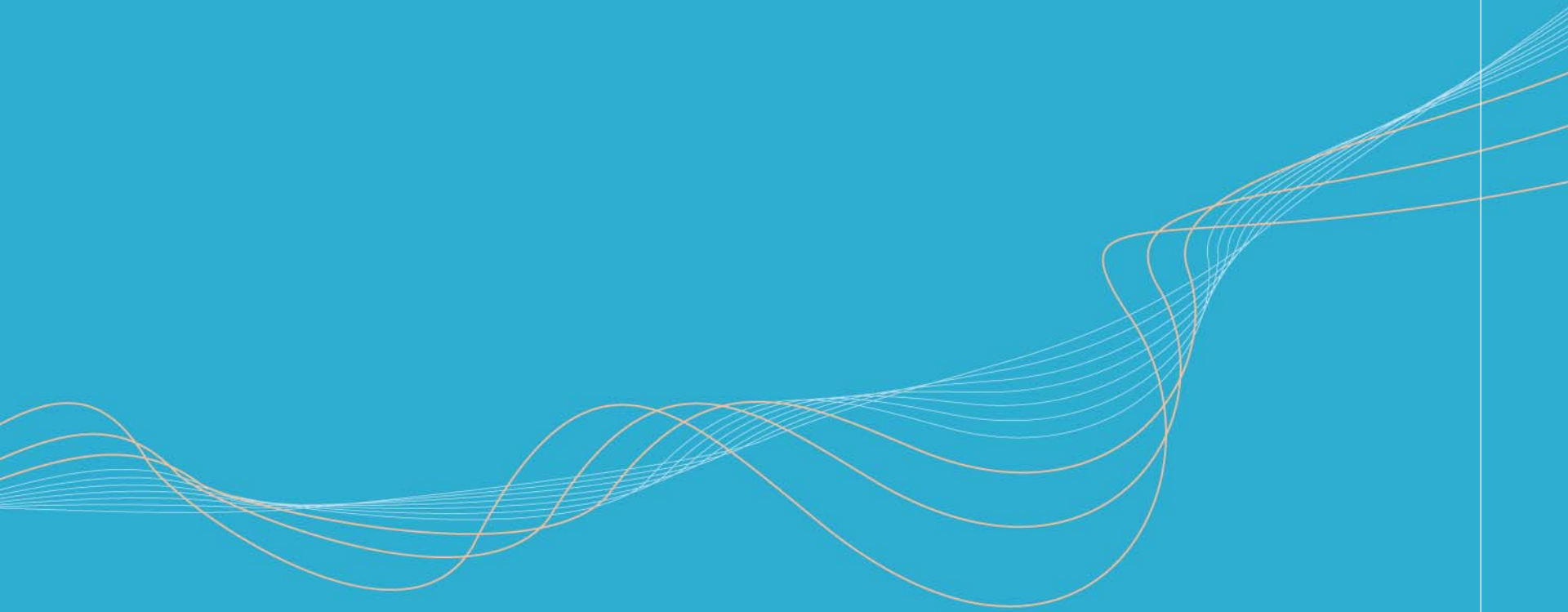
Cost of the Service

No. of Game Develop	Cost (S\$) (Inclusive of GST)	Development Time (upon acceptance of assignment)
Using Game Formats 'Quiz Show' / 'ShowDown' / 'Billionaires'		
1 Game	25	5 working days
2 Games or more	20 per game	5 working days per game
Using Game Format 'SpinOff'		
1 Game	55	10 working days
2 Games or more	45 per game	10 working days per game

Terms and Conditions

1. Questions and Answers must be provided using a standard template (provided by SingHealth Academy)
2. Sources/References must be provided (to avoid misrepresentation)
3. SingHealth Academy shall not be liable for any misrepresentation due to the error of the requestor
4. Any changes to the questions and answers must be requested through email within 2 working days from the date of Order Acceptance
5. The Games are for teaching purposes and not for resale (due to copyright infringement)
6. The copyright of the game formats resides with SingHealth Academy, however the content's copyright resides with the requestor

Contact Details



For more information, please contact us at:

academy@singhealth.com.sg

Thank you



PATIENTS. AT THE HE^{RT} OF ALL WE DO.